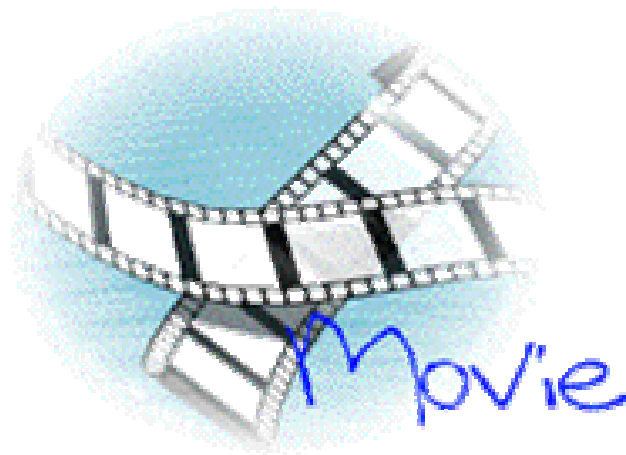


For the Love of Movies



User's Guide

Copyright and Legal Notice

Copyright ©2004 by Team BackRoweSoft. All Rights Reserved.

Table of Contents

Preface	v
Chapter 1: Installing and Running FLM	1
System Requirements	1
Installing with the Installation Wizard	2
Choosing Custom Installation Options.....	4
Running.....	5
Uninstalling FLM.....	5
Chapter 2: Navigating the Program and Viewing Information	7
The Menu Bar	7
General Information	8
The Movie List Area	9
The People List Area.....	10
The Movie Detail Area.....	11
The Person Detail Area	11
Chapter 3: Managing Your Movie Information	13
How Information Is Related in the FLM Application	13
Add or Edit Information Manually.....	14
Enter Information via the FLM Online Resources	16
Appendix A – Troubleshooting	17
Index	19

Preface

So, you enjoy movies? *For the Love of Movies* (FLM) allows you to catalog movies you own or enjoy and track information about them.

With internet access, you can automatically download new and updated information about your favorite movies and stars from the biggest repository of information, The Internet Movie Database (IMDb at <http://www.imdb.com> – all at the click of a button. FLM quickly connects to a web service that provides all of the movie data from IMDb.

When it's time to go shopping, simply print a report of the movies that you *want* to own and simply haven't had the chance to acquire yet. You will have a compact form to take with you so you won't have to wonder which movies were "on the list."

If you enjoy movie trivia, you will love FLM. Not only can you organize your movies by genre, video format, stars, directors, etc., but also, with the Movie Connections feature, you can build connected lists – also known as Six Degrees of Separation. You can ask the database questions like "Is there a connection between M. Night Shyamalan and Kevin Bacon?"

Finally, FLM will allow you to import and export movie information to an external file so that you can use the data in other applications or on other platforms. This is handy for those who would like to take their purchase list to the store on a PDA or to transfer to an Excel spreadsheet.

This User's Guide is your main resource for learning how to use FLM. You will be able to get the program installed and learn all of the details about the application.

Chapter 1: Installing and Running FLM

This chapter walks you through a description of computer requirements and how to install FLM on your computer. The pictures in this guide depict a Windows XP version. Other Windows versions will appear different.

This chapter assumes that you are already familiar with Microsoft Windows[®]. Refer to your Windows manual or help system if you have questions on how to use standard Windows functions or applications.

System Requirements

The minimum computer configuration, platform requirements, and other details necessary for the software to run are:

- An Intel[®] Pentium 4 processor (any speed).
- 128MB of memory.
- 3MB of Hard Drive space. More space may be necessary depending on the amount of information that you enter into the application.
- Microsoft Windows 98/ME, Windows 2000, Windows XP, or Windows Server 2003.
- The Microsoft .NET Framework version 1.1 installed.
Available from
<http://msdn.microsoft.com/netframework/technologyinfo/howtoget/default.aspx>.
- Internet connection if you would like to connect to the FLM Online Resources.

Installing with the Installation Wizard

This section walks you through a detailed description of how to install FLM on your computer. After reading this section and following the steps, you will have installed FLM on your computer.

1. Insert the CD into the CD drive or download the file from the internet from the following URL:

<http://4theloveofmovies.com/downloads/SetupFLM.exe>.

You can enter the hyperlink above into the address field of your browser then press the enter key on your keyboard. You may save the file to any place on your hard drive or open the file as stated in step 2.

2. Start the install wizard by running the **SetupFLM.msi** file or by selecting **Open** from the dialog in Step 1 above.
3. Read the messages in the wizard then click the **Next** button to continue.



4. Choose from the custom installation options (see the following section “Choosing Custom Installation Options”) or click the **Next** button to continue with defaults.



5. Click on the **Next** button to continue and start the installation process. Wait for the process to complete.



6. Click on the **Close** button to exit the wizard when the installation is complete.



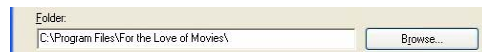
Choosing Custom Installation Options

There are several options available on the **Select Installation Folder** screen to customize the installation of FLM on your computer.



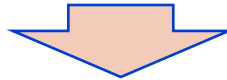
If you want to install the application into a folder of your choosing either:

- Type the new folder path and name in the **Folder** text field.

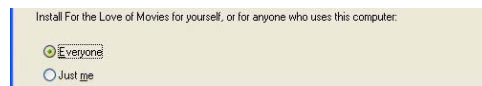


- Click the **Browse** button and navigate to the desired location with the standard **Browse for Folder** interface.

Click the **Disk Cost** button to see how much disk space you have available and how much space is required for the application. Click **OK** to continue.



Click on the desired option button to select if you want the program to be installed for all users – **Everyone** – or just for the current user – **Just me**.



Running FLM

Click the Windows **Start** button, **All Programs** (or **Programs** for Windows 98), and then **For the Love of Movies**.

Refer to Windows Help for more information on using the Start Button or Menu.

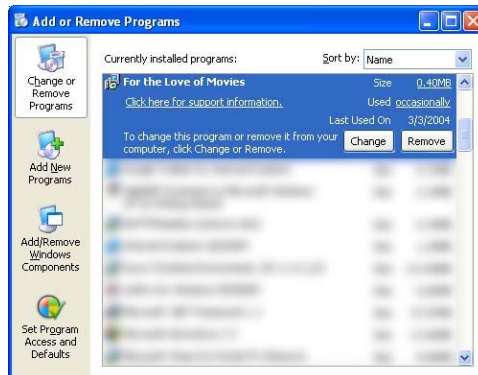
Uninstalling FLM

To uninstall the application:

1. Open the Control Panel then double click on **Add or Remove Programs**.



2. Select **For the Love of Movies** from the list and click on the remove button.



Refer to Windows Help for more information on using the Control Panel or the Add or Remove Programs interface.

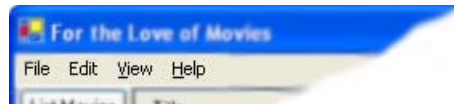
Chapter 2: Navigating the Program and Viewing Information

This chapter will teach you everything you need to know to navigate through the program.

The sections of the program discussed in this chapter are:

- The Menu Bar
- The Movie List Area
- The Movie Detail Area
- The People List Area
- The Person Detail Area

The Menu Bar



The **File** menu will allow you to add a new person or movie to your movie database or exit the program.

Click on the **File** menu then

- To add a new person or movie, move the cursor pointer over the word **New** then
 - Click on **Person** to create a new Person
 - Click on **Movie** to create a new Movie
- To exit the program click on **Exit**

The **Edit** menu will allow you to copy, cut, and paste text at the current cursor location.

The **View** menu will allow you to select either **Movie List** or **People List** to view lists of movies or people.

Click on the **View** menu then

- Click on **Movie List** to view lists of movies.
- Click on **People List** to view lists of people.

The **Help** menu will bring up the **Help Topics** or **About For the Love of Movies**. Click on the **Help** menu then

- **Help Topics** to bring up the help file.
- **About For the Love of Movies** to bring up the application information.

General Information

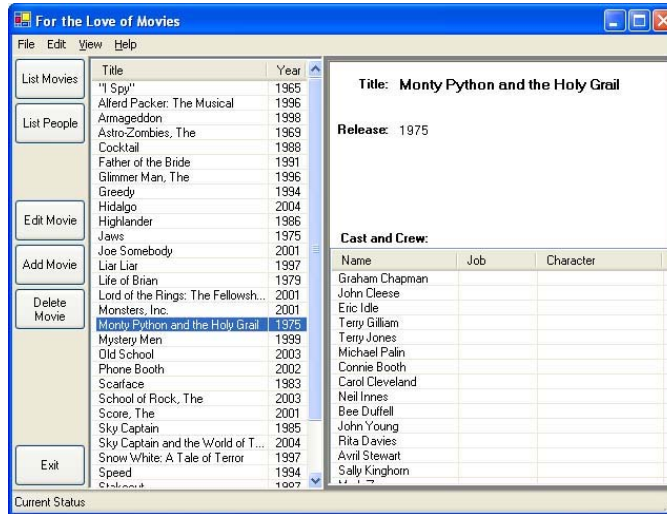
In the areas listed below, the column size can be adjusted as follows:

- Move the mouse cursor over the vertical dividing line between the column headings at the top of the list.
- The cursor will change to a cross with arrowheads on the right and left ends.
- When the cursor changes click and hold the left mouse button while dragging the vertical divider to the left and/or right.
- Release the button when you have moved the divider to the desired location.

The Movie List Area

FLM displays the Movie List Area in the center section of the window when you open the application.

The first time you start the application and until you enter information into the system, the list will be empty.



To open the movie list area at any other time:

- Click on the **List Movies** button on the left side of the main window.

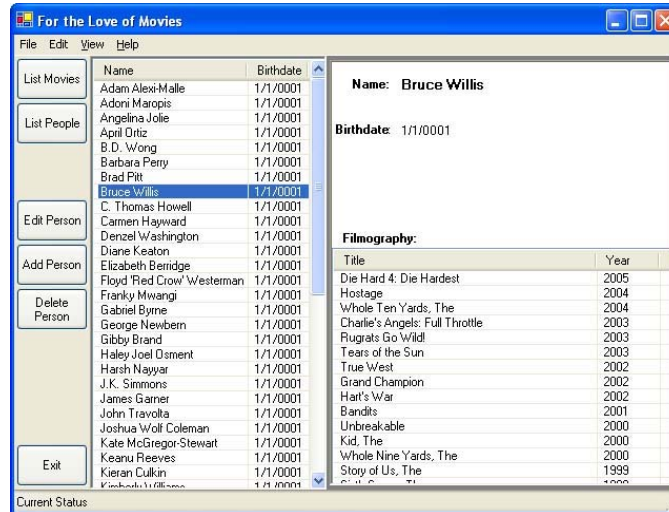
Or

- Click on the **View** menu
- Click on the **Movie List** option.

The People List Area

FLM displays the People List Area in the center section of the window.

The first time you start the application and until you enter information into the system, the list will be empty.



To display the person list area:

- Click on the **List People** button on the left side of the main window.

Or

- Click on the **View** menu
- Click on the **People List** option

The Movie Detail Area

From the Movie List Area, you may click on a movie's title to display the movie's information in the Movie Detail Area on the right side of the window.

The Movie Detail Area will show you information about the movie such as the movie title, the release date, a photo of the movie box, and a list of the cast and crew names, jobs and characters.

The Person Detail Area

From the People List Area, you may click on a person's name to display the person's information in the Person Detail Area on the right side of the window.

The Person Detail Area includes the person's name and date of birth and a complete list of the movies and productions (filmography) that the person has been involved with and the year it was released. The list order will be the most current item at the top of the list.

Chapter 3: Managing Your Movie Information

This chapter provides information on the relationship between movies and the people that are associated with them and how to add and edit the movie information with this application.

You will learn how to enter movie and person information into the application and how to edit this information. You may enter information into the FLM database manually or downloaded it from the FLM Online Resources.

How Information Is Related in the FLM Application

There are two major categories of information in FLM: movies and people. Every movie has people associated with it; these people may have directed, written, produced, acted in, or otherwise been on the staff of a given movie.

Each of those persons will have been associated with one or more movies. The roles they had in relation to any given movie will vary and may not be limited to a single role. For example, Kevin Smith wrote, directed, produced, and acted in several movies.

Add or Edit Information Manually

Add or Edit a Movie

1. To create a new movie, click the **Add Movie** button.

Or

To edit an existing movie, select the movie in the Movie List Area and click the **Edit Movie** button.

2. An **Add or Edit** window will open ready to have information typed into it. When editing, the existing information is populated into the window.

Name	Job	Character
Viggo Mortensen		
Zuleikha Robinson		
Omar Sharif		
Louise Lombard		
Adem-Alexi Malle		
Said Taghmaoui		
Silas Carson		
Harsh Nayyar		
J.K. Simmons		
Adoni Maropis		
Victor Talmadge		
Peter Mensah		
Joshua Wolf Coleman		
Franco Muzzeni		

3. You now type in the movie's title in the **Title** box and the movie release date in the **Release** box.
4. To add or edit the people associated with the movie
 - a. Click on the **Add Person** or select a person and click the **Edit Person** button.
 - b. Follow the instructions in the section Add or Edit a Person.
 - c. Repeat these steps as desired.
5. Once you have changed all of the information to your satisfaction, click the **Save This** or **OK** button. This will save the changes to a file on your hard drive. The **OK** button will also return you to the Movie List Area.

Add or Edit a Person

1. To create a new person, click the **Add Person** button.

Or

To edit an existing person, select the person in the People List Area and click the **Edit Person** button.

2. An **Add or Edit** window will open ready to have information typed into it. When editing, the existing information is populated into the window.

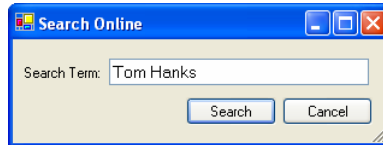
Name	Job	Character
Viggo Mortensen		
Zuleikha Robinson		
Omar Sharif		
Louise Lombard		
Adam Aless-Malle		
Said Taghmaoui		
Silas Carson		
Harish Nayar		
J.K. Simmons		
Adoni Maropis		
Victor Talmadge		
Peter Mensah		
Joshua Wolf Coleman		
Franko Marapic		

3. You now type in the person's name in the **Title** box and his or her birthdate in the **Birthdate** box.
4. To add or edit the movies associated with the person
 - a. Click on the **Add Movie** or select a movie and click the **Edit Movie** button.
 - b. Follow the instructions in the section Add or Edit a Movie.
 - c. Repeat these steps as desired.
5. Once you have changed all of the information to your satisfaction, click the **Save This** or **OK** button. This will save the changes to a file on your hard drive. The **OK** button will also return you to the People List Area.

Enter Information via the FLM Online Resources

If you would like to take advantage of the information already available from FLM Online Resources, follow the steps below.

1. Follow steps 1 and 2 in the Add or Edit Information Manually section for either a movie or a person as appropriate.
2. In the **Add or Edit** window that appears, click the **Go Online** button. This will bring up the **Search Online** window.



3. Type the title of the movie or name of the person you are looking for into the **Search Term** box. If a title or name was in the Add or Edit window, it will be populated into the box.
4. Click on the **Search** button.
5. Wait for the FLM to retrieve the information from the FLM Online Resources.
6. When the search is complete, FLM displays the information in the **Add or Edit** window.
7. Click the **Save This** or **OK** button. This will save the changes to a file on your hard drive. The **OK** button will also return you to the Movie or People List Area.

Appendix A – Troubleshooting

How do I get help?

Click on the **Help** menu then **Help Topics** to bring up the help file.

How is For the Love of Movies (FLM) similar to IMDb?

FLM stores the information about movies and people associated with movies on the users PC. IMDb is a repository of general movie information available for public access. FLM retrieves information from the FLM Online Resources with the **Search Online** feature.

How do I find details about an actor?

Click on a person's name in the person list area. See the Person Detail Area section in chapter 2.

How do I find details about a movie?

Click on a person's name in the movie list area. See the Movie Detail Area section in chapter 2.

Do I have to be online to update movie information?

No. You can add, edit, and save changes locally when offline. You must be online to retrieve updates from FLM Online Resources with the **Search Online** feature.

Who does technical support for FLM?

Send an email to BackRoweSoft Inc. at techsupport@4theloveofmovies.com.

How can I get help from a real person?

Contact BackRoweSoft Inc. at 503-636-1425.

What if I know only part of a movie title or part of a person's name?

FLM is designed to search with limited information. Just enter any information you know and FLM will find all available information starting with the most recent update.

What is the correct order to enter data manually about people's names?

First name, middle name, last name, and suffix (i.e. Jr.) For example: Michael J. Fox or Sammy Davis Jr.

When does information about a movie become available?

The FLM Online Resources are constantly being updated with new information. Frequently use the **Search Online** feature to keep your information current.

Index

FLM Online Resources... 1, 13,
16, 17, 18

FLM Software

- Installing 1, 2
 - Customized 3, 4
 - Location 4
- Requirements 1
- Running..... 1, 5
- Setup 2
- Uninstalling..... 5

IMDb..... v, 17

Internet Movie Database.... *See*
IMDb

Movie

- Adding 14, 15
- Editing 14, 15

Person

- Adding 14, 15
- Editing 14, 15

User Interface

- Menu Bar 7, 8
- Movie Detail 7, 11, 17
- Movie List 7, 8, 9, 11, 14
- People List... 7, 8, 10, 11, 15
- Person Detail 7, 11, 17